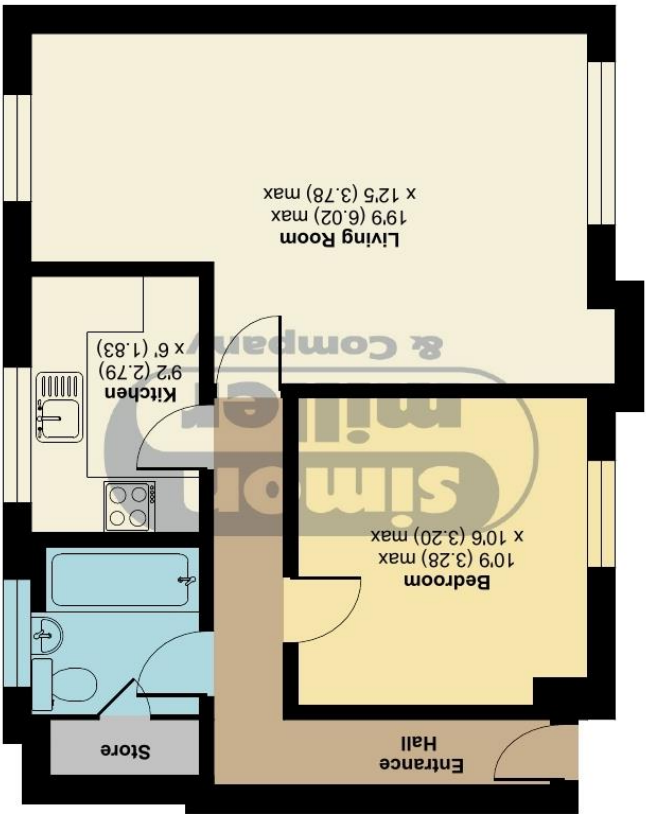


FIRST FLOOR



Approximate Area = 524 sq ft / 48.6 sq m
For identification only - Not to scale

Basing Close, Maidstone, ME15

GUIDE PRICE £140,000 - £145,000
EPC RATING: C

24 BASING CLOSE, MAIDSTONE, ME15 7UZ





The property is situated within a popular and pleasant location and the accommodation consists of a spacious lounge/diner, double bedroom, bathroom and kitchen. There is a communal security entry system leading into the flats. Additionally there are communal gardens and communal parking. Due to the location and the property, this type of property will attract a lot of interest therefore an internal inspection is highly recommended.

MATERIAL INFORMATION

**Leasehold
123 Years
Ground Rent £150.00: p/a
Service Charge: £1,057.72 p/a
EPC Report (C)
Council Tax Band (B)**



- **ONE BEDROOM FIRST FLOOR FLAT WITH ACCESS TO A LOFT SPACE**
- **POPULAR AND PLEASANT LOCATION**
- **LONG LEASE**
- **COMMUNAL PARKING**
- **GOOD CONDITION THROUGHOUT**
- **CHAIN FREE**